

Lympho Spin Medium / PBMC Spin Medium



Order No.
Size

Order No.	Size
60-00092-10	100 ml
60-00092-11	250 ml
60-00092-12	500 ml

描述

PBMC Spin是一种无菌的、随时可使用的密度培养基，用于从新鲜的人血或水皮中分离外周血单核细胞，产量高。用PBMC Spin培养基进行一步密度梯度离心即可富集细胞。通过与Leuko Spin Medium结合使用，在双梯度离心法中，可以在一个步骤中分离和分离粒细胞和PBMCs，具有高产率和高纯度。PBMC Spin培养基可替代Ficoll-Paque¹、Pancoll²和Lymphoprep，而无需改变现有方案。富集的细胞可用于广泛的下游应用，如MACS、pluriBead或干细胞研究。

¹ Ficoll-Paque是GE Healthcare/Cytiva的商标

² Pancoll是PAN-Biotech GmbH的商标

³ Lymphoprep是Alere Technologies Inc的商标

⁴ MACS是Miltenyi Biotec GmbH的商标。

应用

Separation scheme for PBMC enrichment with PBMC Spin Medium

At first carefully layer the sample material on top of the PBMC Spin Medium. Avoid a mixing of the two phases. Alternatively it's possible to use **pluriMate** tubes. The barrier prevents the mixing of the two phases and enables to pour off the enriched cells after the first centrifugation step. After the density centrifugation aspirate the upper layer (Plasma and dilution buffer). Afterwards transfer the mononuclear cell layer to a new conical tube and wash the cells.

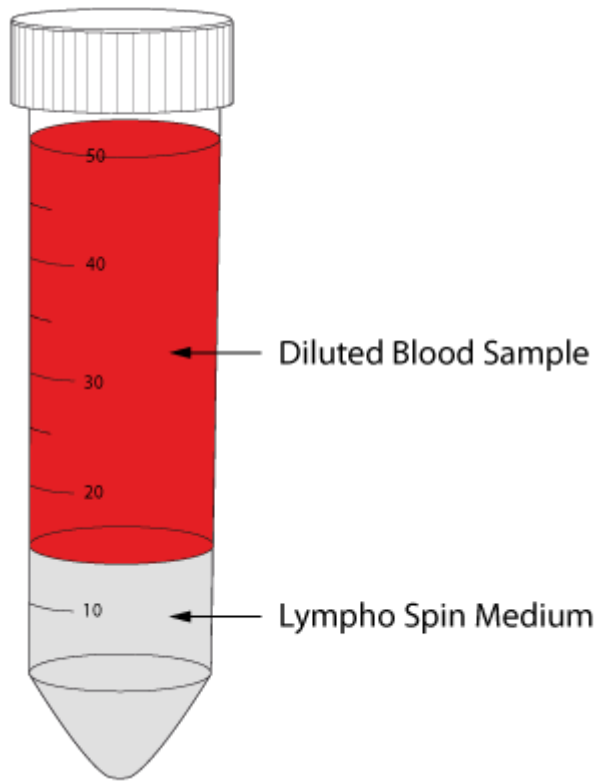


Fig. 1: Preparation of PBMC with Lympho Spin Medium. The sample material will be overlaid on top of density gradient medium.

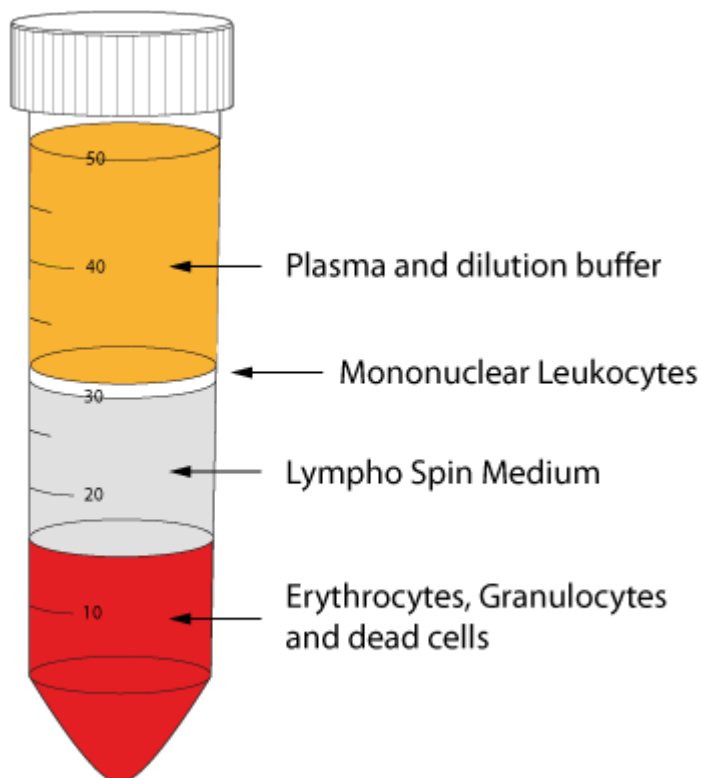


Fig. 2.: Layers after density gradient centrifugation. The PBMC can be found on top of the Lympho Spin Medium. Erythrocytes, Granulocytes and dead cells will pass the medium and can be found at the bottom of the tube.

Additional Information

交付时间	1-2
样品料	Whole Blood, PBMC, Buffy Coat, Cord Blood, Bone Marrow, Primary Cell Solution
储存条件	室温，避光
规范性声明	仅供研究使用。不用于诊断程序。
相位范围	6.8 - 7.4

Warning and Limitations

This product is for research and development only, not for diagnostic or therapeutic use.