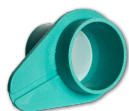


pluriStrainer 10 µm



	Order No.	Size	Sterility	Packaging	Packaging Unit
<input type="radio"/>	43-50010-00	1 pc.	Non-sterile	Loose	/ Pack
<input type="radio"/>	43-50010-01	1 pc.	Sterile	Single-packed	/ Pack
<input type="radio"/>	43-50010-03	25 pcs.	Sterile	Single-packed	25 pcs. / Pack
<input type="radio"/>	43-50010-50	50 pcs.	Non-sterile	Loose	50 pcs. / Pack

Specification

Mesh Size: 10 µm
Strainer Color: turquoise
LOT: stated on the label
Mesh Material: PET
Housing Material: PE

Applications

- Obtaining a real single cell suspension after enzymatic digestion of mammary tissue and organoids
- Dissociation of cells from other primary tissue
- Preparation of a single cell suspension of blood cells from bone marrow, pancreas, thymus, lymph nodes and others
- Preparation of real single cell suspension for flow cytometry
- Faster and easier alternative to gauze filtration
- Filtering agglutinative proteins produced in inactivation serum
- Sieving of complex and viscous liquids (in combination with Connector Ring & Syringe for low pressure)

Component Description

The pluriSelect cell strainer - pluriStrainer is a sterile sieving device to obtain real single cell suspensions or to remove cell aggregates. Its unique design features improved ventilation to avoid clogging - furthermore it can be combined with a Connector Ring (41-50000-03) to use low pressure which supports the filtration. pluriStrainer® are stackable to allow direct filtration with different mesh sizes. pluriStrainer® can be inverted to recover the sieved material. For large sample volumes it can be combined with a funnel. It fits into any 50 mL centrifuge (conical) tube and is available in mesh sizes from 1 - 500 µm.

Usage



Simple Sieving

Attach pluriStrainer® to a sterile 50 mL centrifuge tube. Then, add sample material onto the strainer and filter sample.



Reversed

To obtain the larger fraction, take off the pluriStrainer®, turn it upside down onto another 50 mL tube and flush back the sample from the pluriStrainer®.



Stacked

Stacking of pluriStrainer® with different mesh sizes allows for straining various cell sizes at the same time.

Advanced Usage



With Funnel

You can add up to 24 mL sample material on top.



With Connector Ring

pluriStrainer® in combination with a Connector Ring allows to control the rate of flow by opening or closing the Luer-Lock.



With Connector Ring + Syringe

If you add a syringe to the Connector Ring, it is possible to force low pressure to support the straining of rough sample material while pulling the piston.

Component Storage Condition

The product is stable until the expiry date stated on the label when stored unopened as indicated below. Avoid bacterial contamination.

Product Type	Storage Condition	Stability	Important Notes
pluriStrainer	room temperature	stated on the label	-

Warning and Limitations

The product is for research and development only, not for diagnostic or therapeutic use.

pluriSelect Life Science - Worldwide

Deutscher Platz 5a, 04103 Leipzig, Germany
Phone: +49 341 333 858-0 | Fax: +49 341 333 858-99
Email: support@pluriselect.com

pluriSelect USA - North America

2030 Gillespie Way, Unit 103, El Cajon, CA 92020, USA
Phone: +1 619-202-4297 | Fax: +1 619-828-8003
Email: support@pluriselect-usa.com